

Item	Part	Description
1	06582	SANDER ADAPTER
2	06583	COLLET BODY
3	06528	COLLET (1/4")
3	06529	COLLET (1/8")
3	06530	COLLET (3/16")
3	06540	COLLET (3MM)
3	06541	COLLET (6MM)
4	06516	COLLET NUT
5	06633	LOCK NUT
6	06581	OUTPUT SHAFT
7	06611	BALL BEARING
8	06645	BEVEL GEAR SET
9	06505	NEEDLE BEARING
10	06551	ANGLE HEAD ASSEMBLY
11	06523	GREASE FITTING
12	06549	CLAMP NUT
13	06510	BALL BEARING 3/8 X 7/8 X 9/32
14	06548	FRONT END PLATE
15	06624	FRONT END PLATE SPACER
16	06547	ROTOR
17	06641	VANE, SET
18	06532	CYLINDER
19	06531	REAR END PLATE
20	06509	BALL BEARING
21	06519	RETAINING RING
22	06533	HOUSING ASSEMBLY
23	06500	SOCKET HEAD CAP SCREW, 4-
24	06512	O-RING
25	06536	SPEED CONTROL VALVE
26	06517	SPRING
27	06514	RUBBER VALVE
28	06537	VALVE PLUNGER
29	06515	O-RING SET
30	06535	VALVE BODY
31	06502	SCREW 8-32 X 3/16 PAN PHIL
32	06538	SAFETY LEVER ASSEMBLY
33	06606	GRIP
34	06539	SILENCER PAD
35	06513	O-RING
36	06525	WASHER
37	06534	INLET ADAPTER
38	06623	SCREEN
39	06586	7/16" X 11/16" WRENCH

Parts Page

PARTS LIST FOR PT# 20230 & 25123, 20000 RPM, 2", .33 HP DISC SANDER

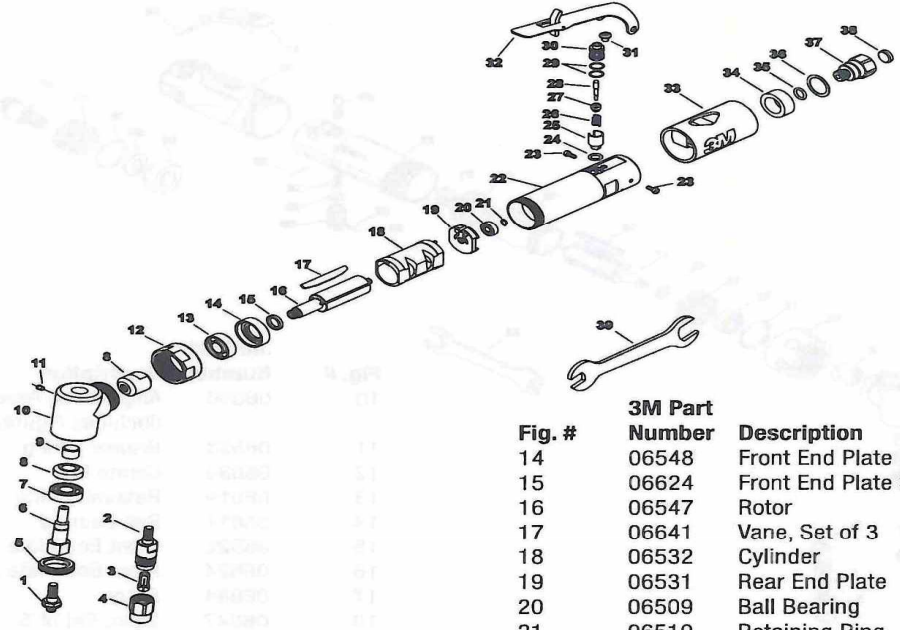


Fig. #	3M Part Number	Description
1	06582	Sander Adapter
2	06583	Collet Body
3	06528	Collet (1/4")
3	06529	Collet (1/8")
3	06530	Collet (3/16")
3	06540	Collet (3 mm)
3	06541	Collet (6 mm)
4	06516	Collet Nut
5	06633	Lock Nut
6	06581	Output Shaft
7	06611	Ball Bearing
8	06645	Bevel Gear Set
9	06505	Needle Bearing
10	06551	Angle Head Assembly (Includes Figures 9 & 11)
11	06523	Grease Fitting
12	06549	Clamp Nut
13	06510	Ball Bearing 3/8" x 7/8" x 9/32"
14	06548	Front End Plate
15	06624	Front End Plate Spacer
16	06547	Rotor
17	06641	Vane, Set of 3
18	06532	Cylinder
19	06531	Rear End Plate
20	06509	Ball Bearing
21	06519	Retaining Ring
22	06533	Housing Assembly (Includes Figures 23-32)
23	06500	Socket Head Cap Screw, 4-40 (2)
24	06512	O-Ring
25	06536	Speed Control Valve
26	06517	Spring
27	06514	Rubber Valve
28	06537	Valve Plunger
29	06515	O-Ring (2)
30	06535	Valve Body
31	06502	Screw 8-32 x 3/16" Pan Phil Mac
32	06538	Safety Lever Assembly
33	06606	Grip
34	06539	Silencer Pad
35	06513	O-Ring
36	06525	Washer
37	06534	Inlet Adapter
38	06623	Screen
39	06586	7/16" x 11/16" Wrench (2)