

ITEM	part	Description
1	06582	SANDER ADAPTER
2	06583	COLLET BODY
3	06528	COLLET (1/4")
3	06529	COLLET (1/8")
3	06530	COLLET (3/16")
3	06540	COLLET (3MM)
3	06541	COLLET (6MM)
4	06516	COLLET NUT
5	30387	RETAIN RING (12K RPM)
5	30386	RETAIN RING (20K RPM)
6	30385	OUTPUT SHAFT (12K RPM)
6	06581	OUTPUT SHAFT (20K RPM)
7	30368	BEARING (12K RPM)
7	30391	BEARING (20K RPM)
8	30434	BEVEL GEAR SET (12K RPM)
8	06645	BEVEL GEAR SET (20K RPM)
9	06505	NEEDLE BEARING
10	30383	97° ANGLE HEAD (20K RPM) (INCLUDES FIGURES 9+11)
10	30384	97° ANGLE HEAD (12K RPM) (INCLUDES FIGURES 9+11)
11	06523	GREASE FITTING
12	30411	CLAMP NUT
13	30399	RETAINING RING
14	30416	ANGLE HEAD SPACER
15	06611	BALL BEARING
16	30413	FRONT END PLATE
17	06624	FRONT END PLATE SPACER
18	30417	THREADED ROTOR
19	30435	VANE SET
20	30415	CYLINDER
21	30414	REAR END PLATE
22	06612	BALL BEARING
23	30403	O-RING
24	30409	HOUSING
25	30405	O-RING
26	30406	VALVE PIN
27	06614	COMPRESSION SPRING
28	30401	O-RING
29	30407	REGULATOR
30	06613	COMPRESSION SPRING
31	06622	STEEL BALL
32	30394	REGULATOR PIN
33	28573	HOUSING COVER
34	30412	PADDLE ASSEMBLY
35	30395	PIN
36	30410	MUFFLER
37	30382	ROTATABLE EXHAUST
38	30398	INLET BUSHING
39	06586	7/16" X 11/16" WRENCH

PN28328, PN28341  
PN28342, PN28343

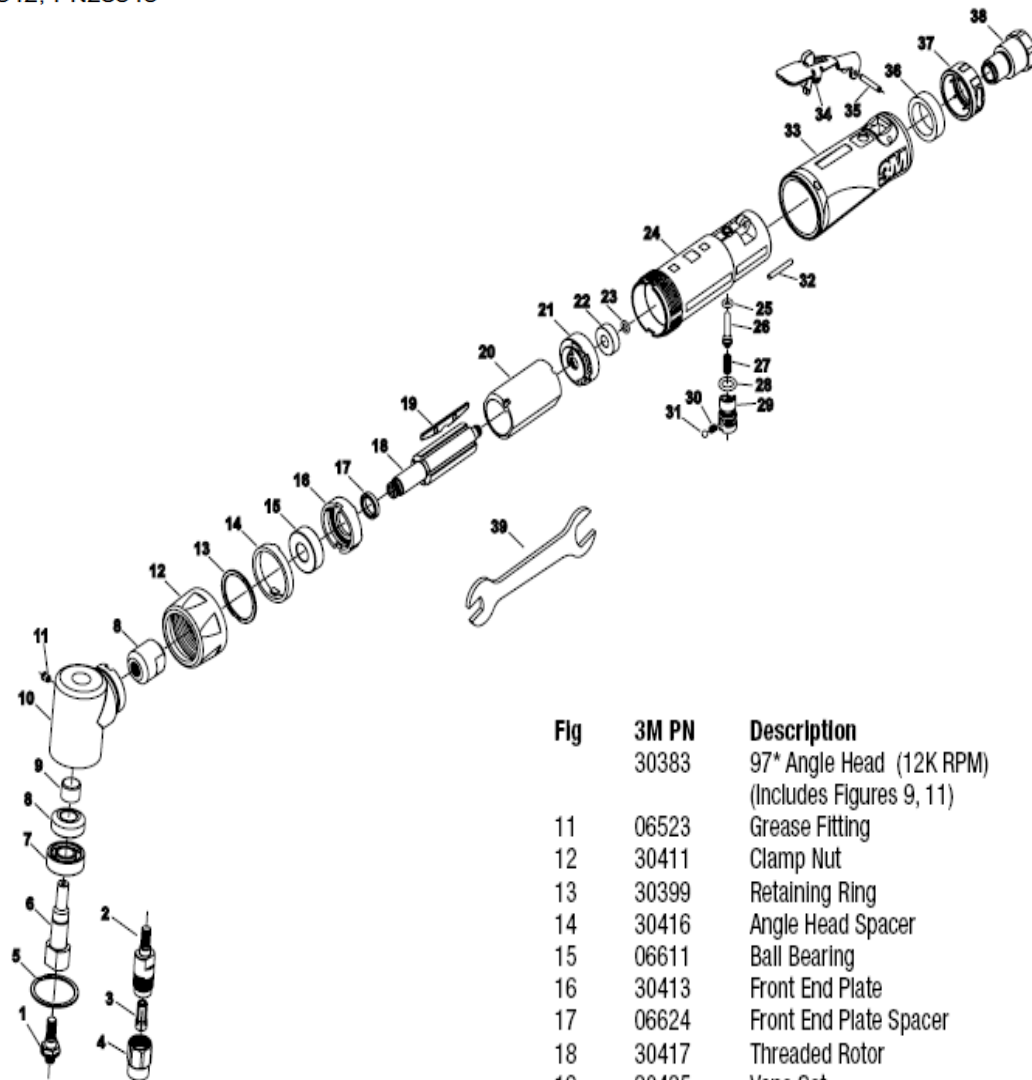


Fig	3M PN	Description
	30383	97° Angle Head (12K RPM) (Includes Figures 9, 11)
11	06523	Grease Fitting
12	30411	Clamp Nut
13	30399	Retaining Ring
14	30416	Angle Head Spacer
15	06611	Ball Bearing
16	30413	Front End Plate
17	06624	Front End Plate Spacer
18	30417	Threaded Rotor
19	30435	Vane Set