

ITEM	part	Description
1	06582	SANDER ADAPTER
2	06583	COLLET BODY
3	06528	COLLET (1/4")
3	06529	COLLET (1/8")
3	06530	COLLET (3/16")
3	06540	COLLET (3MM)
3	06541	COLLET (6MM)
4	06516	COLLET NUT
5	30386	RETAIN RING (20K RPM)
5	06633	LOCK NUT
6	30385	OUTPUT SHAFT (12K RPM)
6	06581	OUTPUT SHAFT (20K RPM)
7	30368	BEARING (12K RPM)
7	06611	BALL BEARING (20K RPM)
8	30434	BEVEL GEAR SET (12K RPM)
8	06645	BEVEL GEAR SET (20K RPM)
9	06505	NEEDLE BEARING
10	30438	ANGLE HEAD ASSEMBLY (INCLUDES FIG. 9 & 11)(12,000 RPM)
10	06580	CYLINDER
11	06523	GREASE FITTING
12	06636	CLAMP NUT
13	06619	RETAINING RING
14	06611	BALL BEARING
15	06629	FRONT END PLATE
16	06624	FRONT END PLATE SPACER
17	06634	ROTOR
18	06647	VANE, SET
19	06631	CYLINDER LINER
20	06630	REAR END PLATE
21	06612	BALL BEARING
22	06625	HOUSING
23	06626	TRIGGER VALVE STEM
24	06614	COMPRESSION SPRING
25	06620	O-RING
26	06627	AIR REGULATOR
27	06613	COMPRESSION SPRING
29	06616	PIN
29	06622	STEEL BALL
30	06599	HOUSING COVER, .5 HP
31	06635	PADDLE ASSEMBLY
32	06617	ROLL PIN
33	06632	MUFFLER MATERIAL
34	06615	DISC SPRING
35	06621	O-RING
36	06628	EXHAUST DEFLECTOR
37	06618	INLET BUSHING
38	06586	7/16" X 11/16" WRENCH

PN20231, PN28329
PN28344

PARTS LIST FOR PN 20231, 20,000 RPM & 28329, 12,000 RPM, 2 in, .5 HP Disc Sander

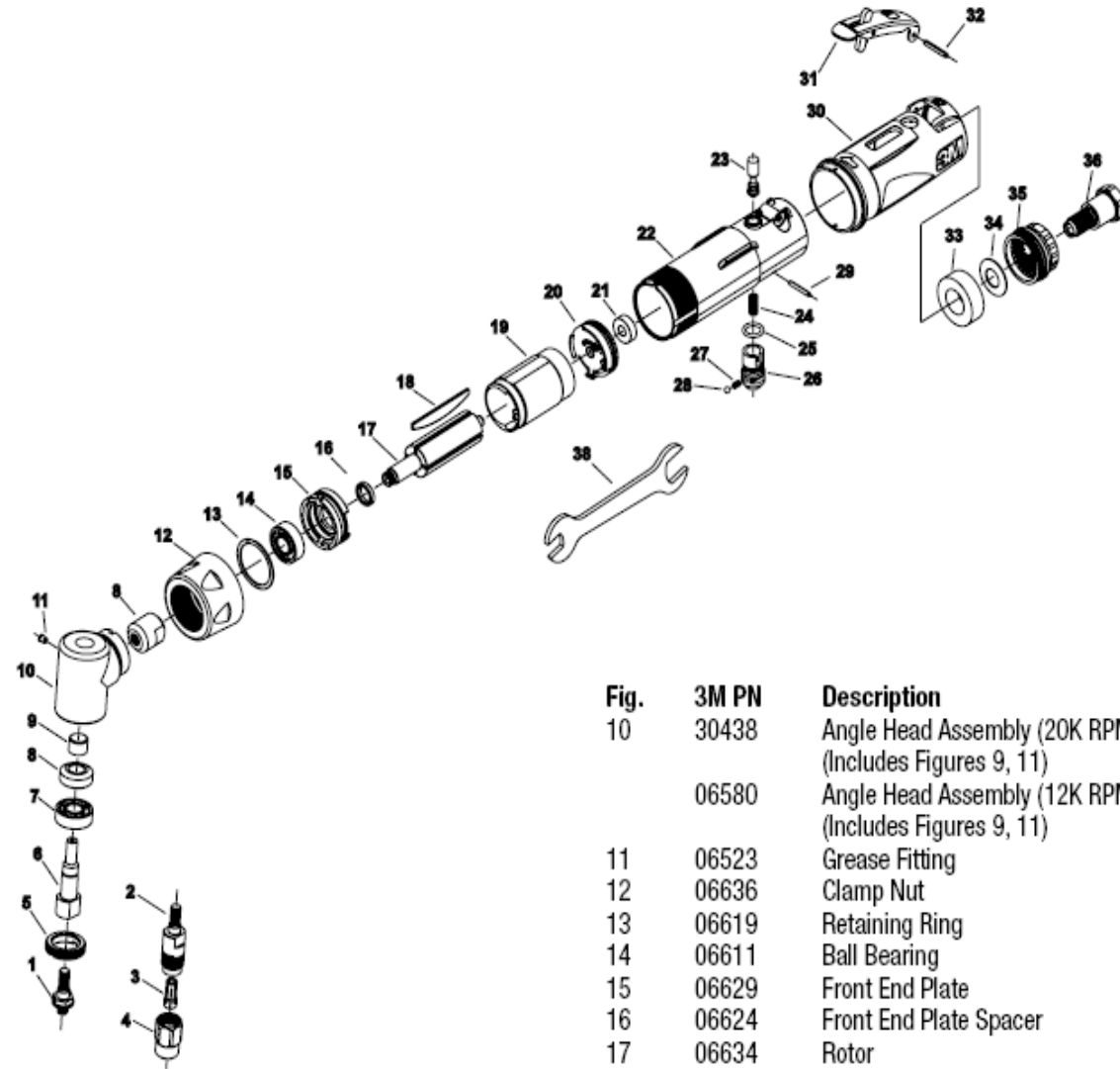


Fig.	3M PN	Description
10	30438	Angle Head Assembly (20K RPM) (Includes Figures 9, 11)
	06580	Angle Head Assembly (12K RPM) (Includes Figures 9, 11)
11	06523	Grease Fitting
12	06636	Clamp Nut
13	06619	Retaining Ring
14	06611	Ball Bearing
15	06629	Front End Plate
16	06624	Front End Plate Spacer
17	06634	Rotor