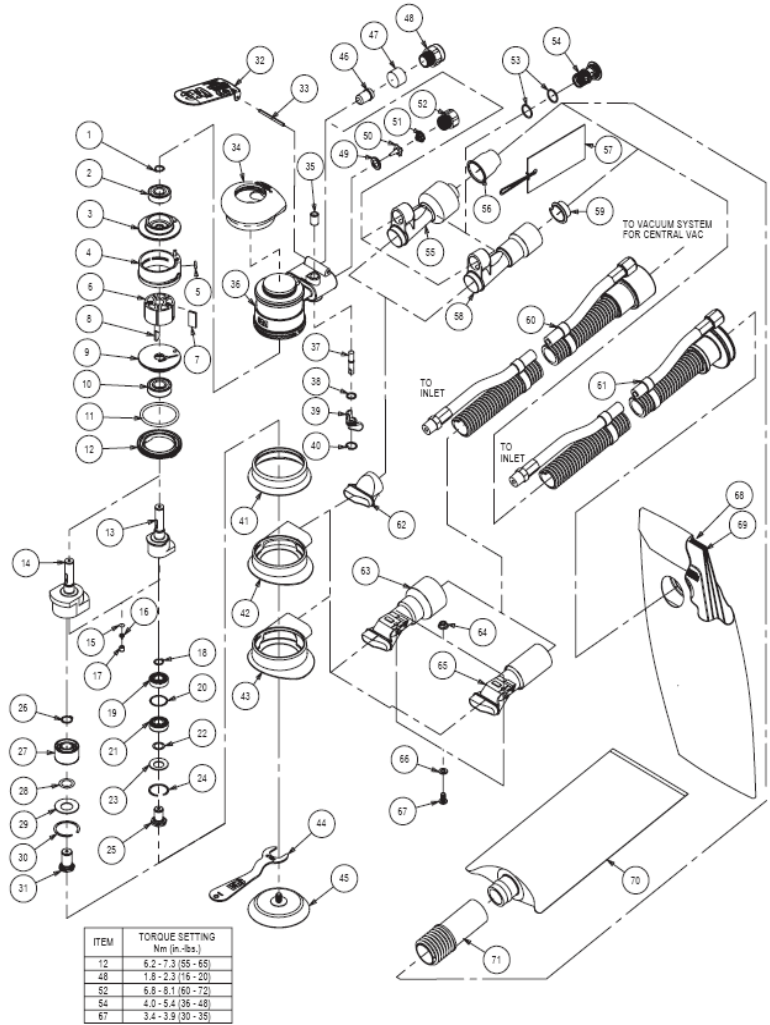


Item	Part	Description
1	A0040	EXTERNAL RETAINING RING
2	A0021	6000ZZ BEARING - 2 SHIELDS
3	B0017	REAR END PLATE
4	A0005	CYLINDER ASSY
5	A0042	5.0 X2.0 O-RING
6	B0005	MACHINED ROTOR
7	A0010	VANE SET
8	A0041	WOODRUFF KEY
9	B0016	FRONT END PLATE
10	A0019	6001ZZ BEARING - 2 SHIELDS
11	A0045	40.0 X 3.5 O-RING
12	A0001	LOCK RING
13	B0084	3 INCHX3/32" ORBIT SHAFT BALANCER
14	B0309	3 INCHX3/16" IN. ORBIT SHAFT BALANCER
15	A0122	FILTER
16	A0121	ONE WAY VALVE
17	A0120	RETAINING SLEEVE
18	A0107	RETAINING RING
19	A0162	6900 BEARING - NO SEAL/SHIELDS
20	A0196	SPACER
21	A0161	6900 2RS BEARING - 1 SEAL
22	A0108	SHIM .2 THK
23	A0126	BELLEVILLE WASHER
24	A0177	RETAINING RING
25	B0083	SPINDLE
26	A0090	11.9MM(15/32")RETAINING RING
27	A0938	DOUBLE ROW ANGULAR CONTACT BEARING - 1
28	A0016	SPACER 0.2 THK
29	A0017	BELLEVILLE WASHER
30	A0018	RETAINING RING
31	B0312	SPINDLE
	PN63024	DROP IN MOTOR FOR 3 X3/32"
	20217	DROP IN MOTOR FOR 3 X3/16"
32	A1351	LEVER FOR 12,000 RPM ROS 2.5MM (3/32")
32	A1352	LEVER FOR 12,000 RPM ROS 5.0MM (3/16")
32	A1447	LEVER FOR 3M 12,000 RPM ROS (5/16IN ORBIT)
33	A0031	LEVER SPRING PIN
34	B0321	GRIP 2 3/4". RED
34	B0322	GRIP 3". RED
35	A0015	VALVE SLEEVE
36	A1332	HOUSING(3" ROS)
37	A0008	VALVE STEM ASSY
38	A0043	9.0 X 1.5 O-RING
39	B0014	SPEED CONTROL
40	A0039	INTERNAL RETAINING RING
41	A1334	3" ROS NON-VAC SHROUD
42	A1335	3" ROS SKRIT/SHROUD (3/32" ORBIT)
43	A1230	3" ROS SHROUD (3/16" ORBIT)
44	A1776	WRENCH(17MM)
45		SUPPLIED BY 3M
46	A1991	MUFFLER SET POS. 46+47+48
47	A1991	MUFFLER SET POS. 46+47+48
48	A1991	MUFFLER SET POS. 46+47+48
49	A0009	VALVE SEAT
50	A0007	VALVE
51	A0014	VALVE SPRING
52	A0013	INLET BUSHING ASSY
53	A0044	14.0 X 1.5 O-RING SET
54	A0006	SGV RETAINER
55	A1338	1"/28MM HOSE SGV SWIVEL EXHAUST ASSEMBLY
56	A0778	1IN / 28MM HOSE SEAL
57		SUPPLIED BY 3M
		3/4IN./19MM HOSE SUPERVAC SGV SWIVEL EXHAUST ASSEMBLY
58	A1340	EXHAUST ASSEMBLY
59	A0854	3/4IN./19MM HOSE SEAL
60		SUPPLIED BY 3M
61		SUPPLIED BY 3M
62	A1333	SGV SKRIT/SHROULD ADAPTER
63	A1343	ROS CV SWIVEL EXHAUST ASS'Y
64	A0048	M5 FLANGED NUT
65	A1345	ROS SUPERVAC CV 3/4
66	A0047	M5 WASHER
67	A0769	SCREW
68	A1434	VACUUM BAG FOR 3M
69	C0109	VACUUM BAG INSERT
70	Z0452	DUST BAG
71	A1669	FILTER BAG ADAPTOR (IDENTIC WITH PART

PN20250, PN20251, PN20252, PN20314, PN20315, PN20316, PN63371, PN63375, PN63376, PN63377, PN63998



3M 3 in. ROS

2

Revision 0520