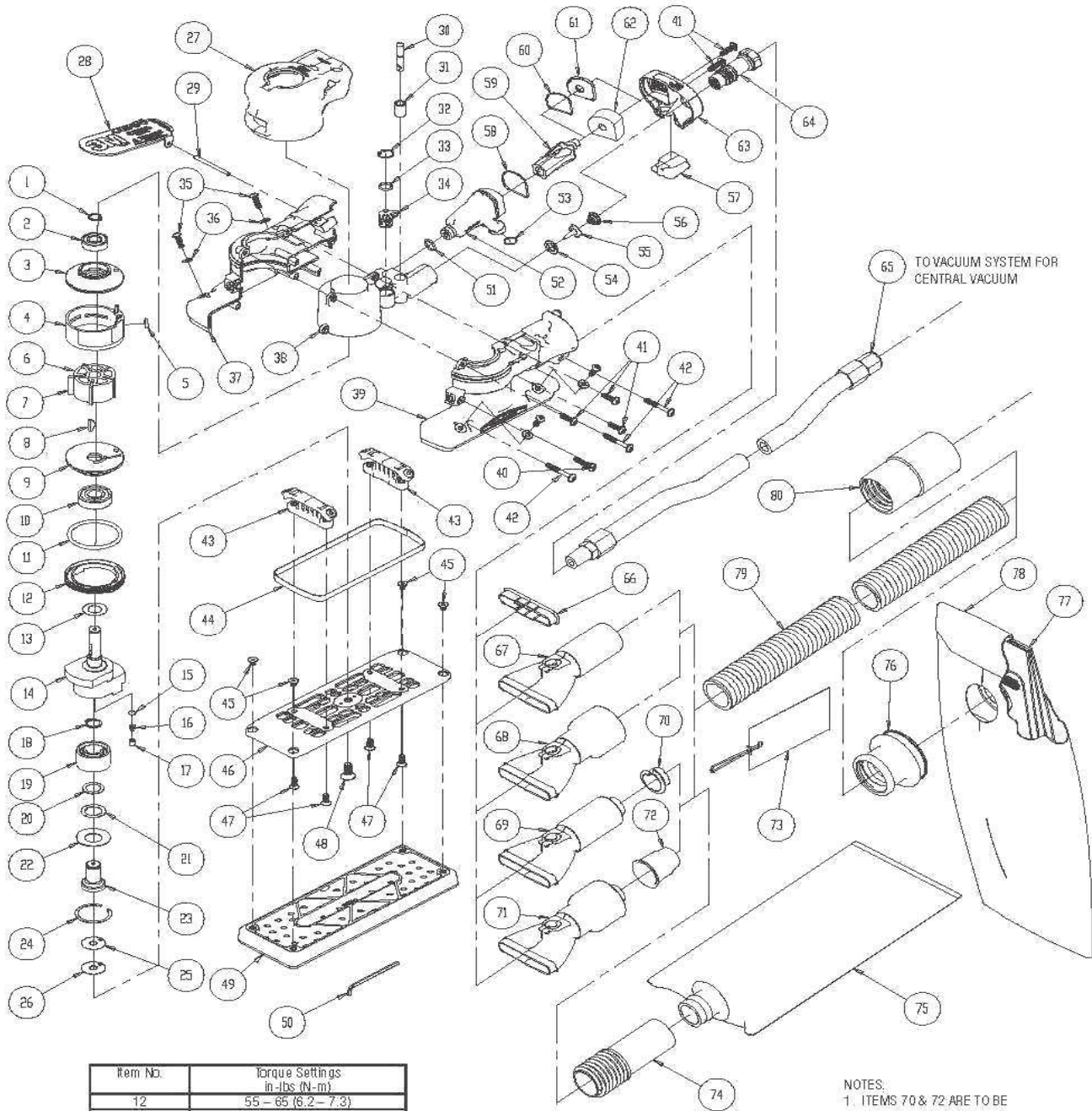


Item	Part	Description	Item	Part	Description
1	A0040	ETERNAL RETRAINING RING	41	A1398	SCREW SET M4 X 15MM (IDENTIC WITH 3MPN 30321)
2	55185	BEARING 10MMX22MMX6MM	42	A1430	SCREW SET M4 X 30MM (IDENTIC WITH 3MPN 30322)
3	55174	REAR END PLATE	43	55213	MINI PAD SUPPORT ASSY.
4	A2175	CYLINDER ASSEMBLY (IDENTIC WITH 3MPN 30347)	44	55164	SHROUD SEAL FOR 70MM x 198MM OS
5	A0042	O-RING	45	A0766	SCREW SET M4 X 6MM
6	B0005	ROTOR	46	55200	70MM x 198MM PAD BACKING - CLEAR MACHINED
7	A0010	VANE SET	47	A0767	SCREW SET M4 X 10MM
8	A0041	WOODRUFF KEY 3MM X13MM	48	A0078	M6x14 SCREW
9	A1832	FRONT END PLATE (IDENTIC WITH 3MPN 30326)	49		SUPPLIED BY 3M
10	A0019	BEARING - 2 SHIELDS	50	A0864	2.5MM HEX WRENCH
11	A0045	O-RING	51	A0043	O-RING - 9 MM X 1.5 MM
12	A1993	LOCK RING (IDENTIC WITH 3MPN 30337)	52	55195	EXHAUST CHAMBER 10.000 OPM
13	55186	FRONT BEARING DUST SHIELD	53	55165	O-RING, 9,5MM X 1MM
14	55197	SHAFT BALANCER, 70 X 198MM 1/8 in. (3MM) ORBIT OS AIRSHIELD™,	54	A0009	VALVE SEAT
15	A0122	FILTER	55	A0007	VALVE
16	A0121	DRUCKBILL CHECK VALVE	56	A0014	VALVE SPRING
17	A0120	VALVE RETAINER	57	55166	NON-VACUUM COVER, ELITE
18	A0090	RETRAINING RING	58	55175	O-RING, 28MM X 1MM
19	A0938	12MM X 28MMX16MM DOUBLE ROW ANGULAR CONTACT BEARING - 1	59	55191	INTERNAL MUFFLER ASSEMBLY
20	A0016	THICK	60	55176	O-RING, 24.0 X 1.0
21	55187	SPINDLE BEARING DUST SHIELD	61	55173	SELF GENERATING EXHAUST CAP, GEN 2
22	A0017	BELLEVILLE WASHER	62	55179	MUFFLER ELITE
23	55162	SPINDLE ASSY.	63	55201	END CAP, ELITE
24	A0018	RETRAINING RING	64	55171	INLET BUSHING ASSEMBLY, ELITE
25	A0079	D-WASHER(0.2THK)	65	20209	Ø 3/8 IN. X 4 FT. AIR LINE WITH Ø 1/4 IN. COMPRESSION FITTINGS
26	A0080	D-WASHER(0.4THK)	66	55202	SNAP INVACUUM COVER PLATE - 70MMx198MM OS
27	55204	2 1/2 IN. (65MM) GRIP, ELITE	67	55167	3 X 4 IN. OS & 3 IN. CV SWIVEL EXHAUST FITTING - 3/4 IN./19 MM HOSE
27	55205	2 3/4 IN. (69MM) GRIP, ELITE	68	55168	DCENTRAL-VACUUM SIVEL EXHAUST FITTING - 1in/28 mm HOSE
27	55206	3 IN. (75MM) GRIP, ELITE	69	55193	SELF GENERATING VACUUM SWIVEL EXHAUST FITTING 3/4IN./19MM HOSE 10.000 OPM
28	55184	10.000 OPM 3MM (1/8 in.) ORBIT LEVER, ELITE	70	A0854	3/4IN./19MM HOSE SEAL
29	A0031	LEVER SPRING PIN	71	55194	SELF GENERATING VACUUM SWIVEL EXHAUST FITTING 1IN./28MM HOSE 10.000 OPM
30	A0008	VALVE STEM ASSY	72	A0778	1IN / 28MM HOSE SEAL
31	A0015	VALVE SLEEVE	73		NO SALE ITEM
32	A0039	INTERNAL RETRAINING RING	74	A1669	EUROPE FILTER BAG ADAPTOR (IDENTIC WITH 3MPN 20453)
33	A0043	LEVER SPRING PIN	75	20452	CLEANING FILTER
34	55172	SPEED CONTROL, ELITE	76	B0123	1IN DOUB.BAG (INDENT WITH 3MPN 28302)
35	A0768	SCREW SET	77	C0109	VACUUM BAG INSERT (PAPER)
36	A0076	M4 WASHER SET	78	A1434	VACUUM BAG COVER (SGV MACHINES)
37	55215	RIGHT HANDE HOUSING - 2 3/4 IN. x 7 3/4 IN. (70MMx198MM), ELITE	79	A1485	VACUUM HOSE (INDENTIC WITH 3MPN 28301)
38	55199	INNER HOUSING, MACHINED	80	A1688	HOSE END ADAPTER
39	55214	LEFT HANDE HOUSING - 5/6 IN. (125/150MM), ELITE			
40	55196	SCREW, BUTTON HEAD TORX M4.0 X 20 MM			

PN28527, PN28528, PN28529,  
 PN64900, PN64909, PN64918



Item No.	Torque Settings in -lbs (N-m)
12	55 - 65 (6.2 - 7.3)
35	20 - 25 (2.2 - 2.8)
40	28 - 31 (3.1 - 3.5)
41	27 - 30 (3.0 - 3.4)
42	29 - 33 (3.3 - 3.7)
45	25 - 30 (2.8 - 3.4)
47	25 - 30 (2.8 - 3.4)
48	95 - 105 (10.7 - 11.8)
64	60 - 72 (6.8 - 8.1)

NOTES:  
 1. ITEMS 70 & 72 ARE TO BE  
 RETAINED ON THE BODY OF  
 ITEMS 69 & 71 USING ITEM 73