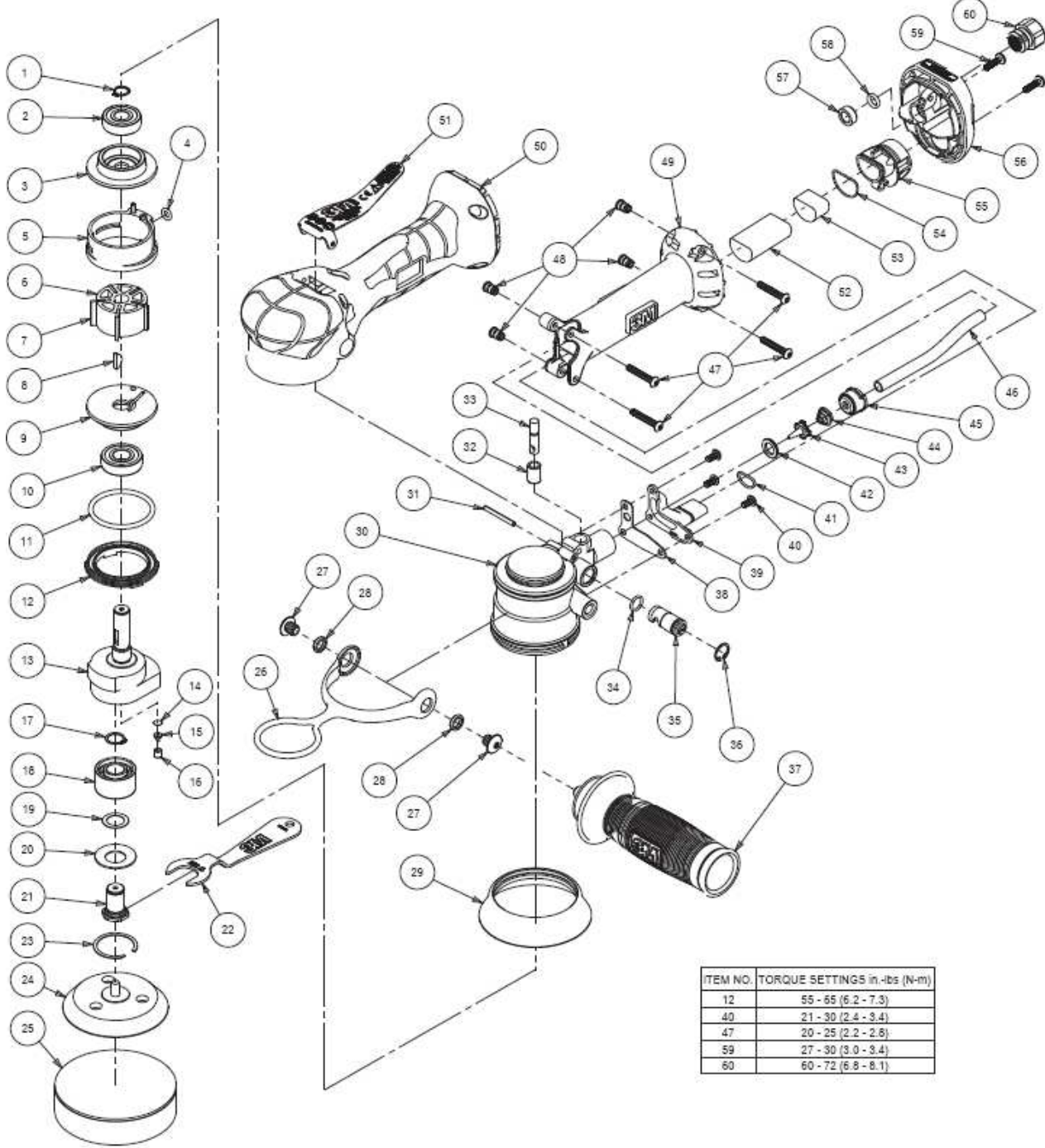


Item	Part	Description	Item	Part	Description
1	A0040	EXTERNAL RETAINING RING	40	A0664	SCREW SET
2	A0021	6000ZZ BEARING - 2 SHIELDS	41	A2114	O-RING
3	A1833	REAR ENDPLATE	42	A0009	VALVE SEAT
4	A0042	5.0 X2.0 O-RING	43	A0007	VALVE
5	A2175	CYLINDER ASSEMBLY	44	A0014	VALVE SPRING
6	B0005	MACHINED ROTOR	45	A0730	AIRLINE SEAL
7	A0010	VANE SET	46	A1956	INLET TUBING
8	A0041	WOODRUFF KEY	47	A0512	SCREW SET
9	A1832	FRONT ENDPLATE	48	A0071	THREADED INSERT SET
10	A0019	6001ZZ BEARING - 2 SHIELDS	49	C0325	HANDLE
11	A0045	40.0 X 3.5 O-RING	50	D0067	GRIP
12	A1993	LOCK RING - 50 MM THREAD	51	A2079	THROTTLE LEVER
13	B0479	SHAFT BALANCER	52	A2043	MUFFLER
14	A0122	FILTER	53	A2174	MUFFLER
15	A0121	ONE WAY VALVE	54	A2081	O-RING
16	A0120	RETAINING SLEEVE	55	B0445	EXHAUST CAP
17	A0090	11.9MM(15/32")RETAINING RING	56	A1952	INLET/EXHAUST END
18	A0938	DOUBLE ROW ANGULAR CONTACT BEARING - 1 SEAL	57	A0510	INLET CAPTIVE RING
19	A0016	SPACER 0.2 THK	58	A0509	O-RING
20	A0017	BELLEVILLE WASHER	59	A1398	SCREW SET
21	B0312	SPINDLE	60	A0013	INLET BUSHING ASSY
22	A1776	17 MM PAD WRENCH			
23	A0018	RETAINING RING			
24		SUPPLIED BY 3M			
25		SUPPLIED BY 3M			
26	A1954	HANGER			
27	A1955	M8 THREADED PLUG SET (identic with part 30322)			
28	A1865	SPACER RING SET			
29	B0508	SHROUD			
30	B0390	MOTOR HOUSING			
31	A0004	SPRING PIN			
32	A0015	VALVE SLEEVE			
33	A1995	VALVE STEM ASSEMBLY			
34	A0043	9.0 X 1.5 O-RING			
35	A2224	FLUSH SPEED CONTROL			
36	A0039	INTERNAL RETAINING RING			
37	A1960	SIDE HANDLE			
38	A1992	GASKET			
39	B0387	MOTOR EXHAUST NOZZLE			

PN28333



ITEM NO.	TORQUE SETTINGS in. lbs (N-m)
12	55 - 65 (6.2 - 7.3)
40	21 - 30 (2.4 - 3.4)
47	20 - 25 (2.2 - 2.8)
59	27 - 30 (3.0 - 3.4)
60	60 - 72 (6.8 - 8.1)