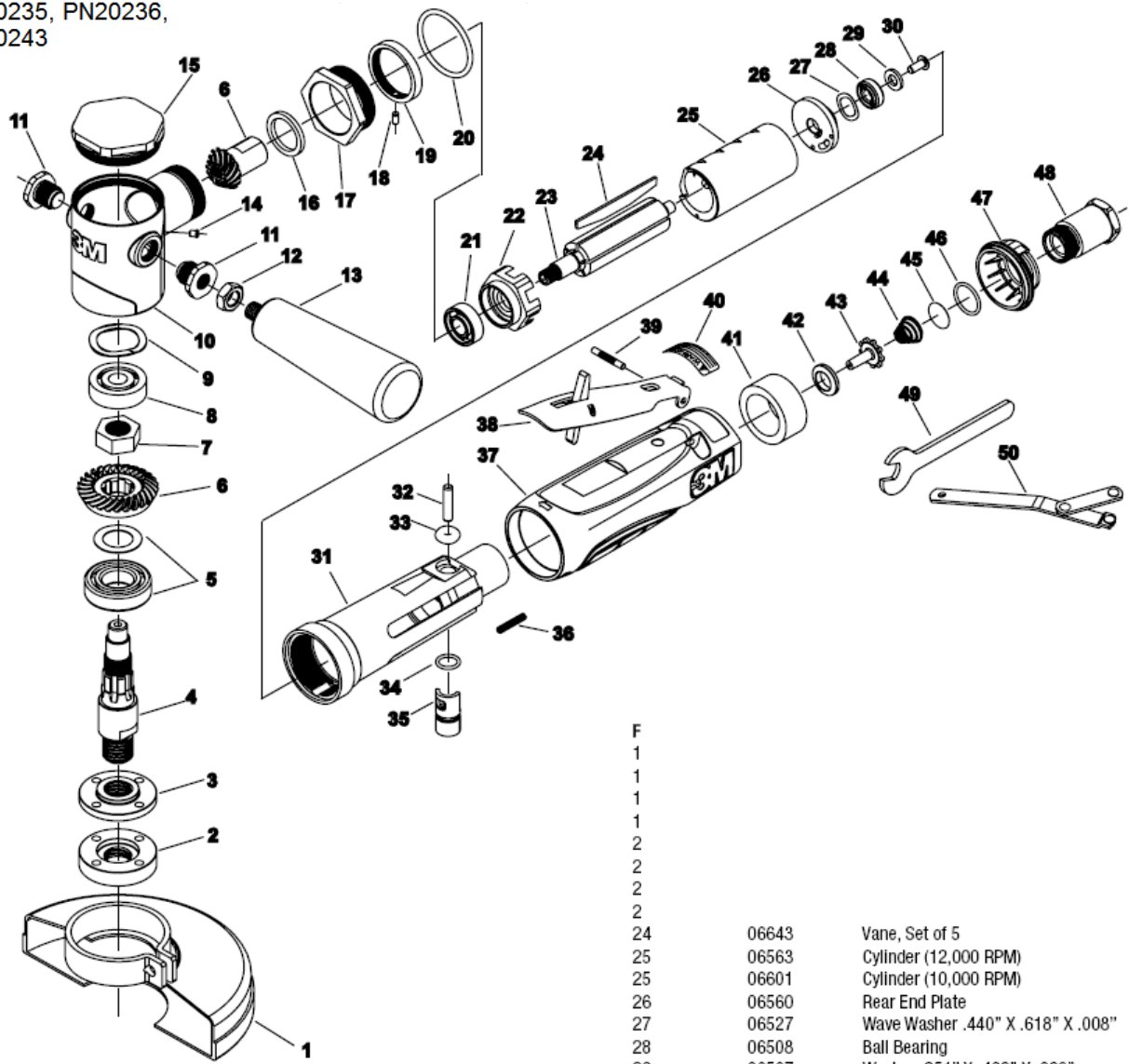


ITEM	part	Description
1	06595	5" CUTOFF GUARD
1	06596	6" CUTOFF GUARD
1	06597	4 1/2" CUTOFF GUARD
2	06590	WHEEL RETAINER
3	06589	WHEEL ARBOR
4	06651	OUTPUT SPINDLE
5	06648	GEAR SPACER AND BALL BEARING
6	06644	SPRIRAL BEVEL GEAR SET
7	06504	ELASTIC STOP NUT 9/16-18
8	06542	BALL BEARING
9	06550	WAVE WASHER
10	06649	HD ANGLE HEAD
11	06654	HEX HEAD PLUG BOLT SET
12	06503	JAM NUT
13	06526	HANDLE
14	06523	GREASE FITTING
15	06650	ANGLE HEAD CAP
16	06652	ANGLE HEAD SPACER
17	06653	ANGLE HEAD CLAMP NUT
18	06520	PIN, 1/8 X 1/4
19	06655	LOCK RING
20	06609	O-RING
21	06510	BALL BEARING 3/8 X 7/8 X 9/32
22	06639	FRONT END PLATE
23	06562	ROTOR
24	06643	VANE, SET
25	06563	CYLINDER
26	06560	REAR END PLATE
27	06527	WAVE WASHER .440 X .618 X .008
28	06508	BALL BEARING
29	06567	WASHER .251 X .468 X .063
30	06568	SCREW #8-32 X 3/8 BUT HD CAP
31	06638	HOUSING
32	06558	TORR PIN, 3/16 X 7/8
33	06543	O-RING
34	06511	O-RING
35	06556	REGULATOR
36	06501	SCREW, 6-32 X 3/4 SET SOC HEX
37	06598	HOUSING COVER
38	06642	LEVER
39	06559	GROOVE PIN, 1/8 X 7/8 TYPE E
40	06566	WARNING LABEL
41	06557	MUFFLER
42	06552	THROTTLE VALVE SEAT
43	06553	THROTTLE VALVE
44	06554	TAPER SPRING
45	06555	SCREEN
46	06608	O-RING, 1/16 X 5/8 X 3/4
47	06604	ROTATABLE EXHAUST DEFL ECTOR
48	06607	INLET BUSHING, 3/8 NPT (4")
49	06524	5/8" WRENCH
50	06544	ADJUSTABLE SPANNER WRENCH

PN20235, PN20236,
PN20243



F		
1		
1		
1		
1		
2		
2		
2		
2		
24	06643	Vane, Set of 5
25	06563	Cylinder (12,000 RPM)
25	06601	Cylinder (10,000 RPM)
26	06560	Rear End Plate
27	06527	Wave Washer .440" X .618" X .008"
28	06508	Ball Bearing
29	06567	Washer .251" X .468" X .063"